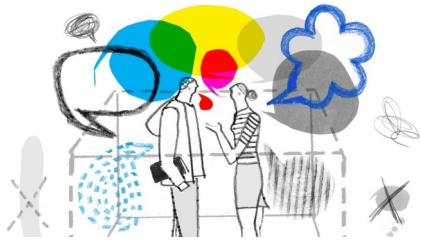


Dinosaur Planet

Key Stage 1 Home Learning Challenge

In RE this half term we are talking about safe places. Draw your safe space and write about why it is your safe space.



Can you create a fact file about Mary Anning? Use a computer at home to find more information out about her.



Research an animal that is extinct. Why is it extinct?



What is your favourite dinosaur?
Draw your dinosaur and write about why it is your favourite.



Have a go at doing an observational drawing of a dinosaur. Think about the



Think of something that you have been able to achieve with the help of your parents. Ride a bike, read and write, etc.

What did they do to help you?

How long did it take for you to learn how to do it?



Have a go at creating your own salt dough fossil. Google how to make it at home and have a go!



Complete 4 activities to get a certificate and a prize at our end of topic celebration.

The activities need to be seen by the class teacher by Monday 20th May.